

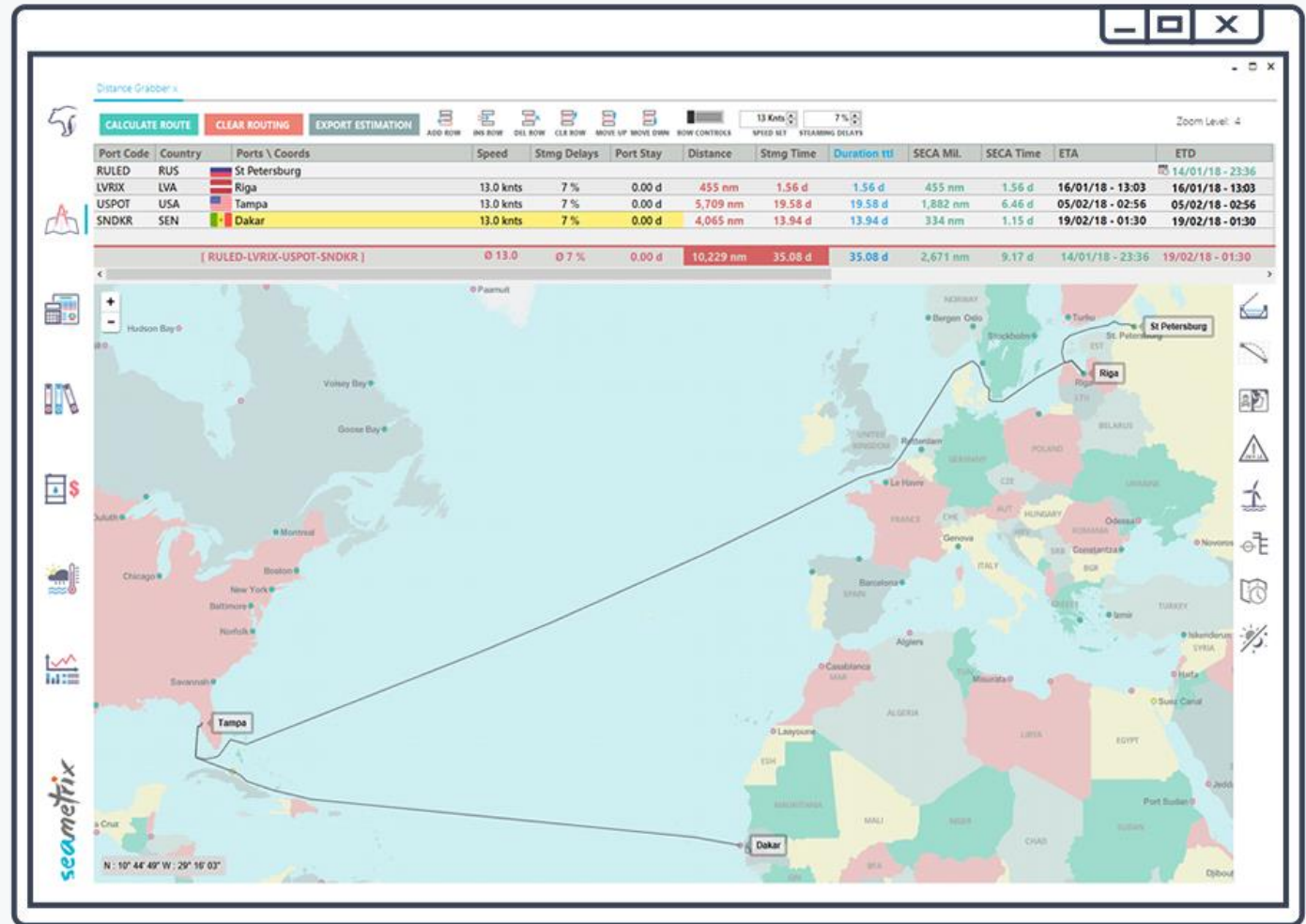


Seamatrix is a modern and advanced sea routing software, with:

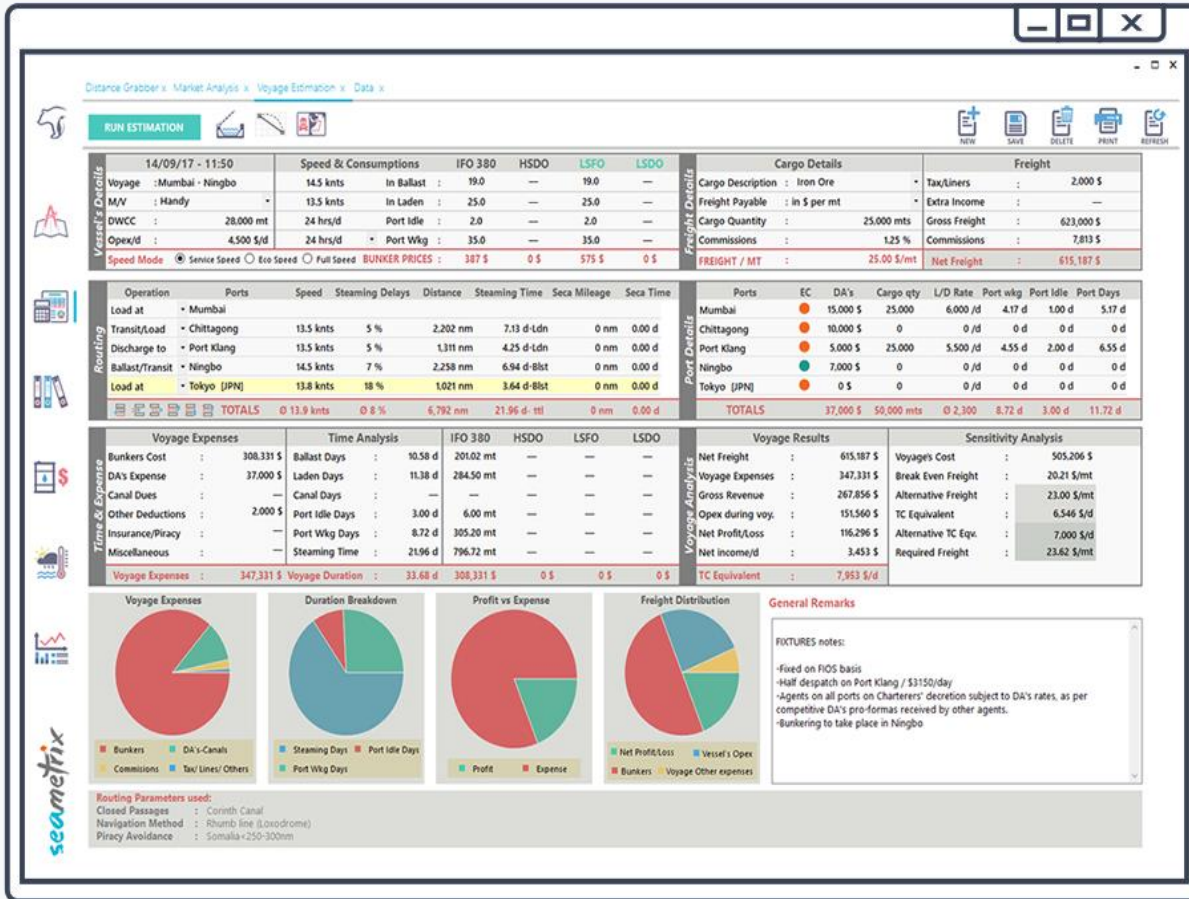
- ✓ Highly accurate sea distances, serving the largest ports-terminals database (30,000 ports)
- ✓ Easy and quick to use Voyage Estimation, fully interacting with the sea distances module
- ✓ Daily updated bunker prices for all major ports, plus real-time energy commodity prices
- ✓ Weather module with Global marine weather coverage, based on NOAA's GFS model
- ✓ Unique Technical Analysis module, with chart analysis of many shipping-related assets

Our sea distances module offers:

- ✓ Extremely accurate sea distances
- ✓ Detailed and real-world-like routing
- ✓ Covering over 30,000 ports/terminals
- ✓ Over one thousand routing points
- ✓ Routing through any chosen waypoint
- ✓ Serving sea & inland navigation globally
- ✓ Accurate Great-circle & Rhumbline results
- ✓ SECA area separate distance counting
- ✓ Piracy avoidance routing
- ✓ Eight On/Off Passages and Canals
- ✓ Many useful map layers, such as:
Load line zones, INL, VRA, HRA, JWLA,
Nordic Nav Limits, Time zones, SECA



Our voyage estimation module offers:

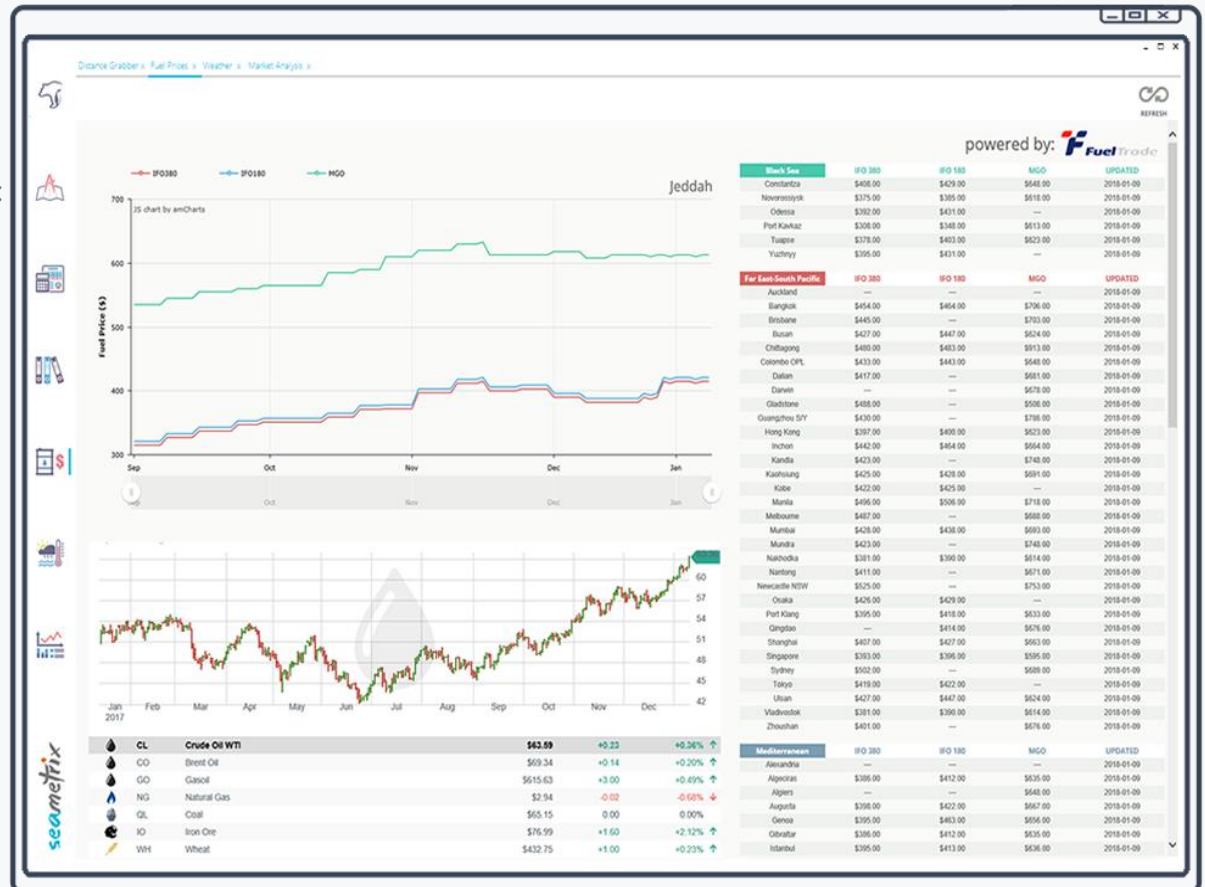


- ✓ Intuitive design for ease of use & reduced work time
- ✓ Option to store your vessels' data & consumptions
- ✓ Work on multiple voyage estimations simultaneously
- ✓ All voyages can be saved locally & retrieved any time
- ✓ Complete time, expense & fuel consumption analysis
- ✓ Pie charts for quick voyage performance viewing
- ✓ Stowage factor information as per selected cargo
- ✓ Sensitivity Analysis scenarios & break-even freight
- ✓ SECA port consumptions for ports within SECA
- ✓ Adjust On/Off passages, piracy avoidance, and navigating method within the voyage estimation

Our bunker prices module offers:

- ✓ Daily updated bunker prices for over a hundred ports
- ✓ Per port chart, with three months history for each fuel
- ✓ Real-time prices and charts, for all major commodities:

- Crude oil
- Brent Oil
- Gasoil
- Natural Gas
- Coal (end of day)
- Iron Ore (end of day)
- Wheat
- Sugar



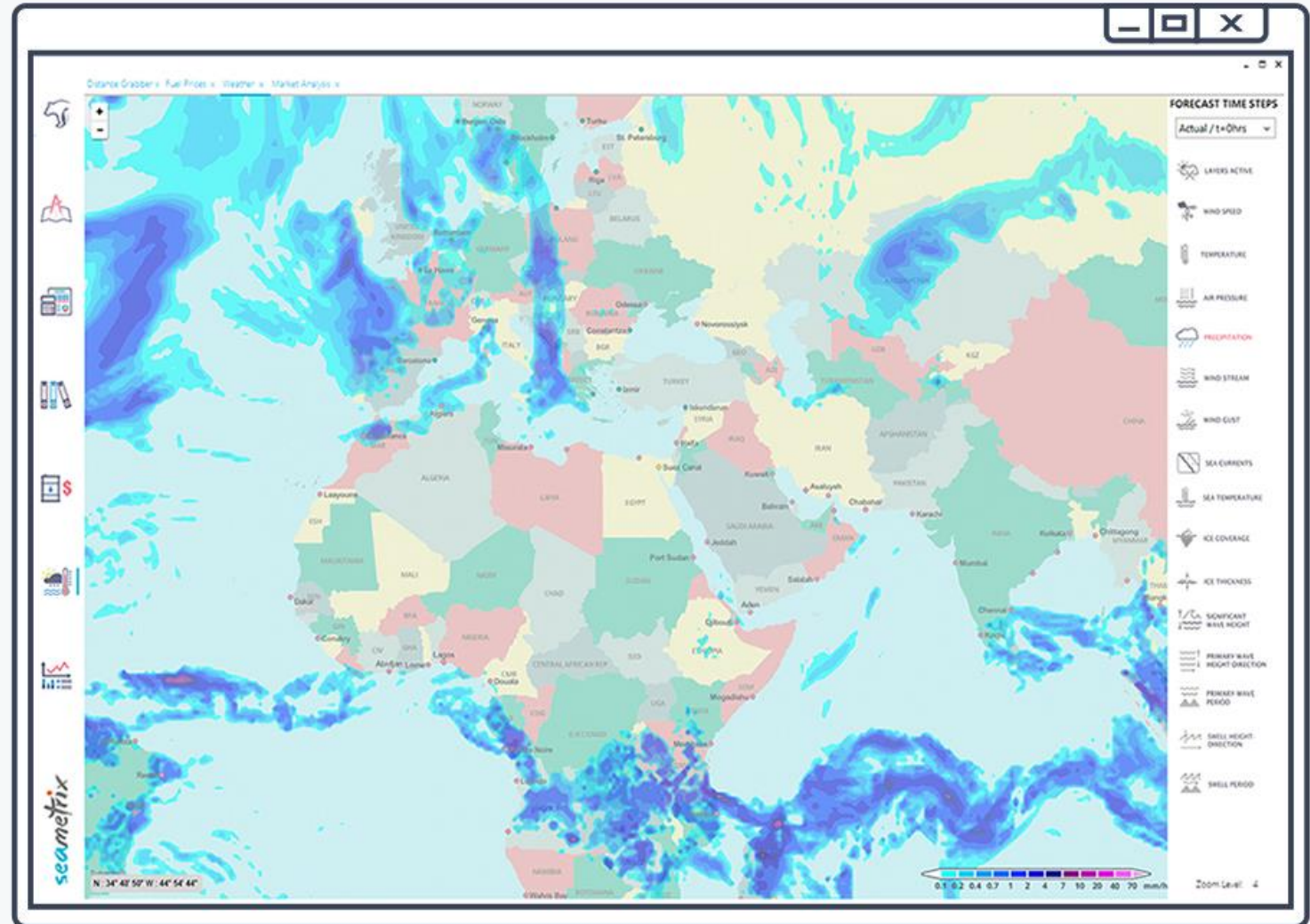
Our marine weather module offers:

✓ Global weather forecast, with many marine weather layers, like:

- Wind Speed
- Wind Stream
- Air pressure
- Wind gust
- Temperature
- Precipitation
- Ice coverage
- Sea currents
- Significant wave height
- Primary wave height-directions
- Primary wave period
- Swell height and direction
- Sea temperature

✓ 12 days area map forecast with:

- Meteograms
- Surface pressure
- Air temperature
- Cloud cover
- Relative humidity
- Precipitation
- Wind Barb
- Wind stream
- Wind Gust
- Wave height
- Swell height & direction



Our Technical Analysis module offers:

- ✓ Specialised technical analysis reports, tailor-made for the maritime industry, covering many shipping-related commodities & assets
- ✓ All our technical Analysis reports are made by experienced and Certified Financial Technicians, with a deep knowledge of shipping
- ✓ Technical Analysis is the ultimate method for tracking smart money & is considered by many the most reliable source of information!
- * Shall you wish more information on this module or samples of our T.A reports, please don't hesitate to contact us.

